



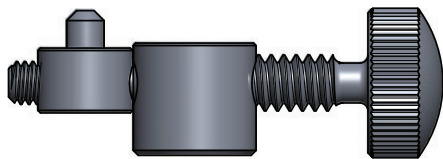
## Miniature Bench Plane

---

This plane is a scaled-down version of the Veritas Small Bevel-Up Smooth Plane. The body is stainless steel that has been precision machined and ground. The plane features a functional Norris-style adjuster.

### Blade Adjustment

Should the blade adjustment mechanism ever get out of the proper configuration, reposition the parts as shown.



### Blade Sharpening

The 0.060" thick by 0.61" wide A2 tool steel blade has the bevel ground at a 25° angle.

*Note: A corrosion-inhibiting paperboard chip is included in the case. It will provide continuous corrosion protection for up to two years.*

### Accessory

**05P82.23** Replacement Blade